



FRN Newsletter

RAISING AWARENESS IN JANUARY

All month long, we collectively raise our voices for these special awareness events.

ONE IN 26

#1in26 Day

Join us in celebrating the incredible strength of Epilepsy Warriors! On **January 26th**, we invite you to join us in honoring them on #1in26 Day.

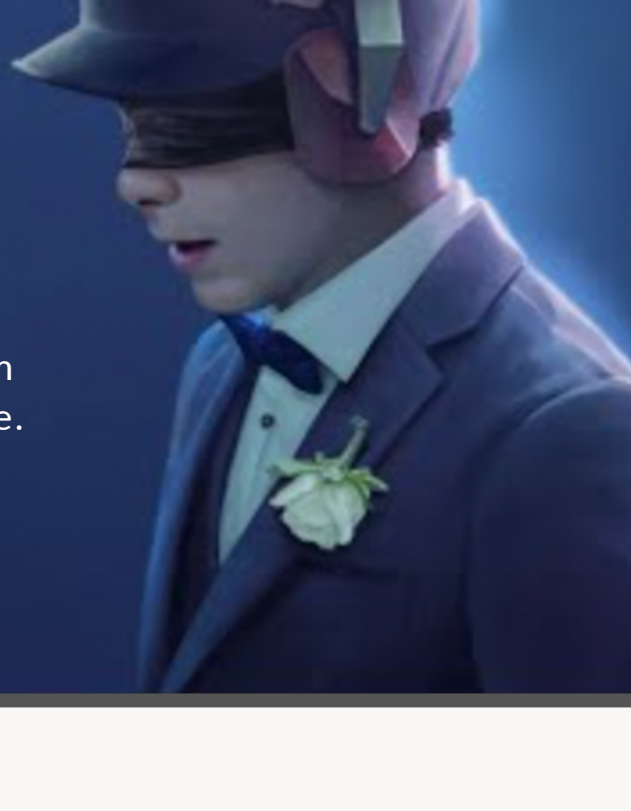
HELP MAKE THIS POWERFUL SHORT INTO A FEATURE FILM!

UNDER THE LIGHTS

It's not a movie. It's a *movement*.

This is the story of Sam, a boy with epilepsy so desperate to feel like a regular kid, he goes to prom knowing that the lights will make him have a seizure.

[DONATE NOW](#)



OUT N' ABOUT

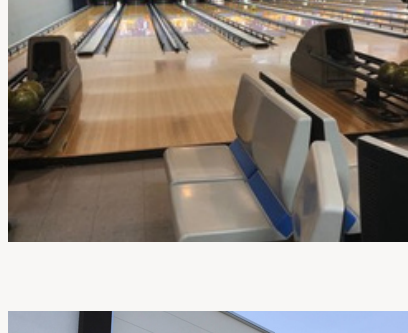
JAN 13



YESTERCADES

Cost: \$12
Time: 10:30am-2:30pm
Location: 151 East Broad St
Westfield, NJ 07090

JAN 13



ROCKAWAY LANES

Cost: \$25
Time: 11:00am-2:00pm
Location: 365 US-46
Rockaway, NJ 07866

JAN 20



DAVE & BUSTERS

Cost: \$30
Time: 10:30am-3:30pm
Location: 310 Willowbrook Mall
Wayne, NJ 07470

ONA events are in Essex, Morris & Union Counties. Please check our social media for upcoming events or contact OutNAbout@familyresourcenetwork.org

OPEN ENROLLMENT FOR 2024 IS HERE!

OPEN ENROLLMENT ENDS 1/31



KEEP YOUR FAMILY COVERED!

FRN Health Insurance Navigators can help compare 2024 plans and see if you qualify for low-cost or free health insurance. Our Navigators will be able to assist you in Spanish, Russian, Hindi, Tamil, and Marathi, if preferred. Contact us today!

CONTACT

FrnNavigator.org | frnnavigator@familyresourcenetwork.org | 800-355-0271

Get Covered NJ

NJ FAMILY CARE
Affordable health coverage. Quality care.

CALL FOR PROPOSALS

NATIONAL CAREGIVERS CONFERENCE

NATIONAL CAREGIVERS CONFERENCE 2024

Shaping Tomorrow's Policies for Today's Caregivers

Join us as a breakout session speaker!

Submit your proposal by **March 1, 2024**

NOVEMBER 3-4, 2024

THE HELDRICH | NEW BRUNSWICK, NJ



CONTACT
p. 800.372.6510
ncc@familyresourcenetwork.org
www.nationalcaregiversconference.org



TRANSITION FAIR

Hosted By Lawrence Township Public Schools in Collaboration with Caregivers of NJ

FEBRUARY 3, 2024

10:00AM-12:30PM

Lawrence High School
2525 Princeton Pike, Lawrenceville, NJ 08648



FOR QUESTIONS OR VENDOR INFORMATION

877-265-6360 | transitionfair@njcaregivers.org

UPCOMING EVENTS



PAINT THE PONY

MARCH 24th!

Save the date for the annual ESNJ event! Paint the Pony is held annually and helps raise awareness for Epilepsy and provides a safe and fun concert for individuals with Epilepsy and their families.

@whattheefpodcast

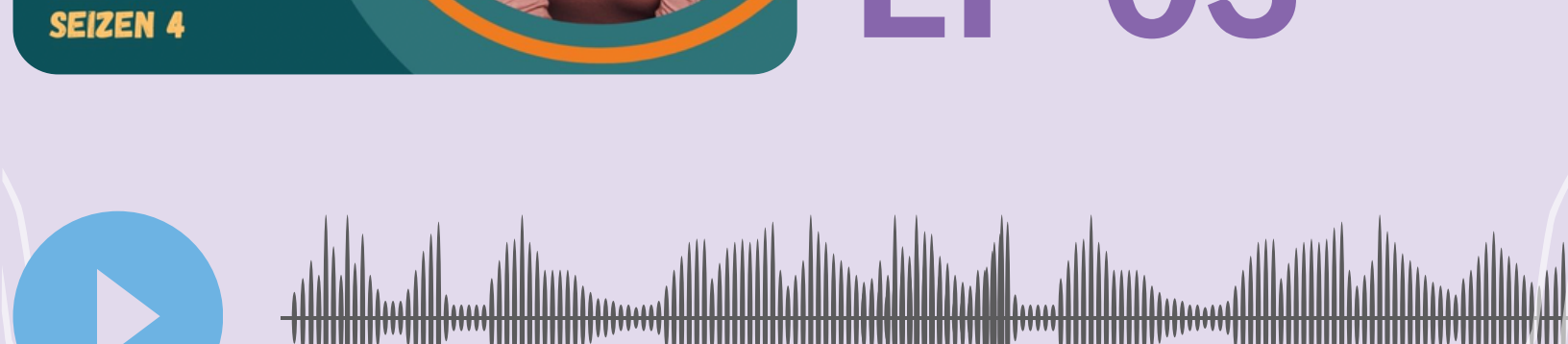
IT'S OK NOT TO BE OK

with Kelly Cervantes

What the EF SEIZEN 4

SEIZEN 4 of the What the EF podcast is out now!

EP 03



[LISTEN ON YOUTUBE](#)